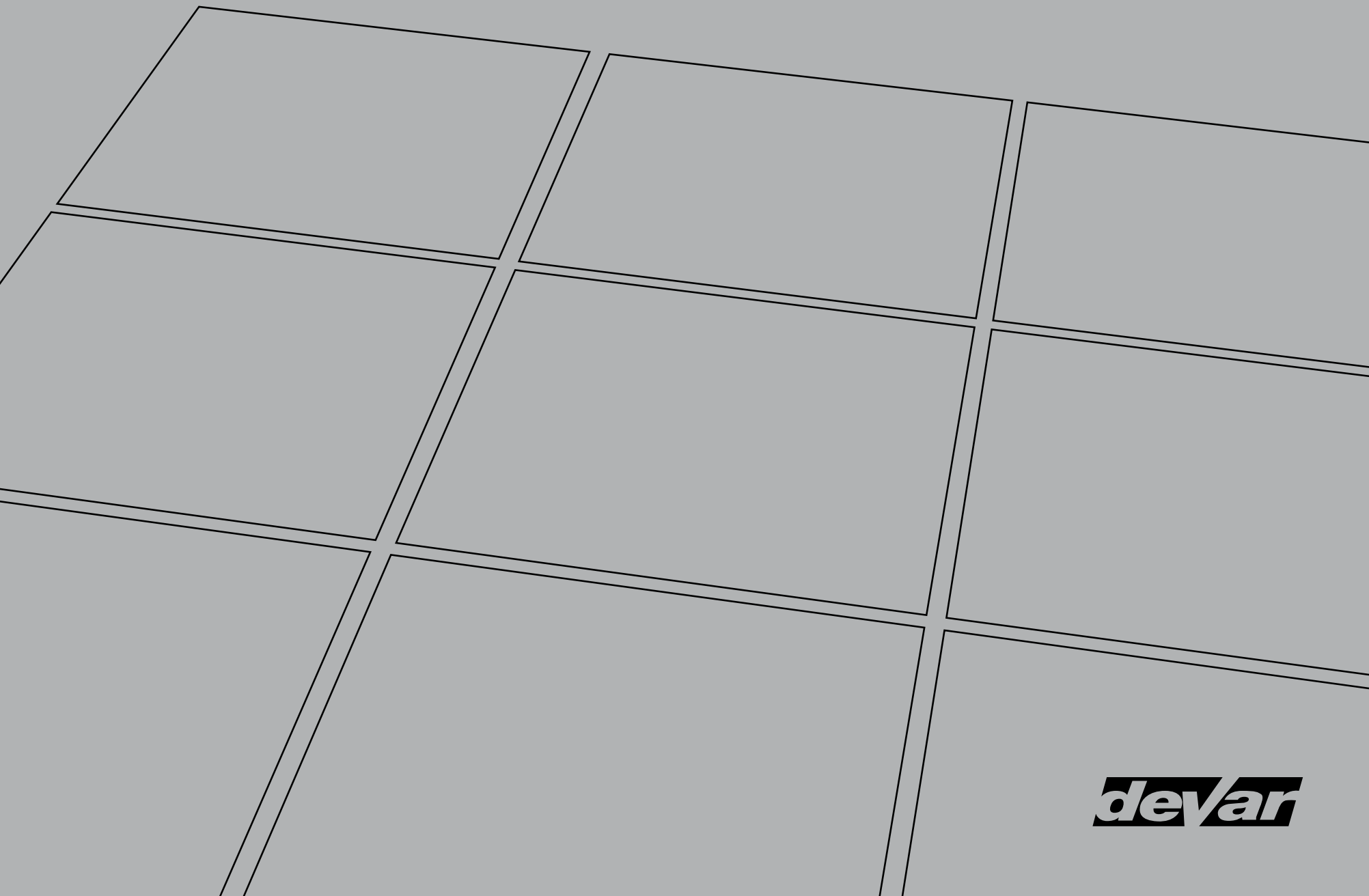


CI/SfB

(33.1) x

JANUARY 2012

# Raised Access Flooring Solutions



**deVar**

# Devar Raised Access Flooring

**Our integrated approach to raised access flooring has ensured that we are the first choice with architects, developers and end users to meet their particular needs.**

Devar's trading history in the provision of flooring solutions started in 1978 from our operating base in Glasgow, Scotland.

Working in partnership with contractors, specifiers, architects and direct clients, we have provided commercial flooring for a host of customers throughout the UK.

Our reputation has been built on an integrated approach, examining the specific needs of each project and choosing the best flooring solution to suit. With an absolute commitment to delivery on time and on budget, we instill confidence in our customers by insisting on the highest quality and performance at every stage.

Our raised access flooring division builds upon the existing Devar reputation and now offers specifiers a new option:



## **A high quality access floor system at a cost effective price.**

We have invested in securing our own manufacturing facility to produce a new 'Devar' access flooring system which has already been implemented successfully on high calibre projects.

We have the skills and capability in product manufacturing and have the detailed knowledge required to ensure a quality installation. We always deliver on budget.

If you would like an informal discussion on how you can upgrade your flooring project without upgrading the cost, please contact:

Technical Services Team,  
Email: [enquiries@devargroup.com](mailto:enquiries@devargroup.com)

or

Stephan Leonard,  
General Manager,  
Devar Access Flooring  
Tel: +44 (0)141 638 2203  
Email: [sleonard@devargroup.com](mailto:sleonard@devargroup.com)



**A Calcium Sulphate  
Core with a reputation  
for excellence.**



**Panel Specification - Medium Grade DMG670**

Size: 600mm x 600mm x 33.5mm  
System Weight: 39.3kg +/- 0.5kg  
Exterior: Fully steel encapsulated  
Interior: Calcium sulphate core  
Finish: Powder coated  
Choice: Gravity Lay or Corner Lock supplied as standard  
Additional Benefits: System fully compliant to PSA MOB PF2 PS/SPU  
Non-combustible: Fire Resistant Class 0  
Enhanced acoustic properties

**High quality  
and performance  
in an adaptable low  
profile panel.**



**Panel Specification - Medium Grade LMG670**

Size: 600mm x 600mm x 27.0mm  
System Weight: 31.0kg +/- 0.5kg  
Exterior: Fully steel encapsulated  
Interior: High density particle board core  
Finish: Galvanised Steel  
Choice: Gravity Lay or Corner Lock supplied as standard  
Additional Benefits: System fully compliant to PSA MOB PF2 PS/SPU



# Projects

1 Project Oxygen, Exeter Business Park  
4 floors of commercial office accommodation  
4,300m<sup>2</sup> of medium grade corner lock calcium sulphate system

2 Kintyre House, Glasgow  
Refurbishment of prestigious commercial office accommodation  
2,000m<sup>2</sup> of medium grade corner lock calcium sulphate system

3 Drumbrae Library and Community Hub, Edinburgh  
4 floors of high quality campus style office accommodation  
1,500m<sup>2</sup> of low profile corner lock and gravity lay wood core systems

4 Collegelands, Glasgow  
Landmark development of high quality campus style office accommodation  
55,000m<sup>2</sup> of medium grade corner lock calcium sulphate system

5 NCR University, EuroCentral  
Replacement of existing flooring system within Centre of Excellence  
1,000m<sup>2</sup> of heavy grade corner lock calcium sulphate system

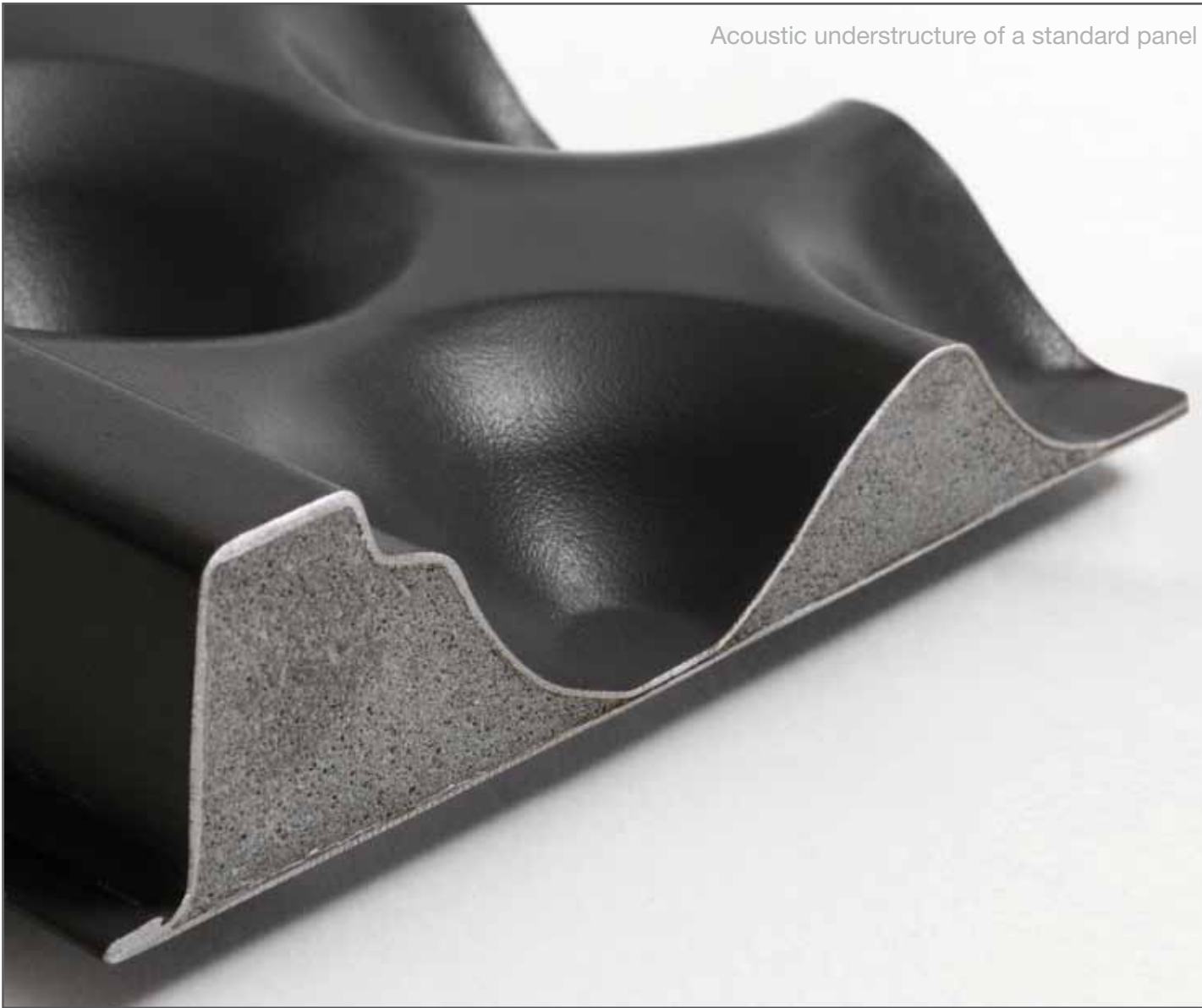
6 Henrietta House, London  
7 floors of commercial office accommodation  
9,000m<sup>2</sup> of medium grade corner lock calcium sulphate system

7 Exchange House, George Street, Glasgow  
3 buildings of commercial office accommodation  
11,000m<sup>2</sup> of low profile corner lock and gravity lay wood core systems

8 Eastgate Office Project, Glasgow  
3 floors of open plan office accommodation  
6,000m<sup>2</sup> of low profile corner lock and gravity lay wood core systems



Acoustic understructure of a standard panel



### The benefits of using a Calcium Sulphate Panel

#### STABLE

Less susceptible to fluctuations in humidity & temperature

#### SAFE

Non-combustible:  
Fire Resistant  
Class 0

#### ENVIRONMENTAL

No timber or  
VOC's used in the  
manufacturing process

# Calcium Sulphate Panels

## Certified Raised Access Floor Systems

Fully Compliant to PSA MOB PF2 PS/SPU and BS EN 12825:2001 standards

**Unlike most other manufacturers, Devar makes the advantages of calcium sulphate core panels available in all situations, not only in heavy duty ranges.**

### General Information

Devar's calcium sulphate panel has become the preferred choice for architects, specifiers and end users due to its enhanced performance characteristics compared to a standard wood core panel.

The calcium sulphate core is inherently less susceptible to fluctuations in humidity and temperature than a wood core product. This assists with on-site installation programming and therefore offers greater flexibility.

The corner lock panel system provides maximum lateral stability at higher floor heights.

### Covering Options

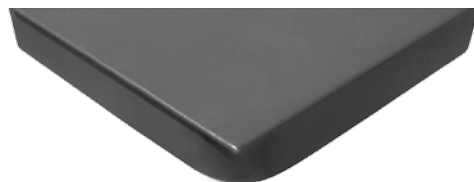
- Standard finish: Powder coated steel
- Integral HPL, PVC or carpet finishes are available, utilising all of the world's top flooring brands

### Benefits

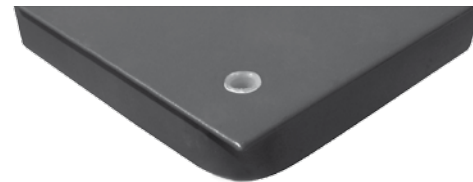
- Exceptionally high rolling load capacity
- Improved acoustic properties
- Non-combustible: Fire Resistant Class 0
- Suitable for areas with high humidity and other specialist applications
- Complies with IEE Regulations (17th Edition)
- Oversize panels available for perimeter details
- Four sides are protected by edge trim
- No volatile organic compounds (VOC's) used
- Exceeds PSA MOB PF2 PS/SPU specification standards

### Recommended Applications

- Light Duty - General office areas
- Medium Duty - High density / populated office commercial areas
- Heavy Duty - Plant rooms, server rooms
- Extra Heavy - Specialist applications and exceptionally heavy equipment requirements



GRAVITY LAY  
WITHOUT HOLES



CORNER LOCK  
WITH HOLES

Both available as standard

Double folded and interlocked steel encapsulation



The benefits of using a Wood Core Panel

ADAPTABLE

Easily worked on site to fit oblique perimeters and structural details

LIGHTWEIGHT

Interlocked encapsulation enables strength without weight: from 31 kg per m<sup>2</sup>

ENVIRONMENTAL

Panels are 100% recyclable at end of life

# Wood Core Panels

## Certified Raised Access Floor Systems

Fully Compliant to PSA MOB PF2 PS/SPU and BS EN 12825:2001 standards

**By encapsulating high density particle board with double folded, interlocking steel sheet, Devar has produced a high quality wood core panel suitable for use in situations where lower height, lower weight and increased adaptability during installation are required.**

### General Information

Devar's wood core panel has been designed with superior double folded, interlocking steel sheet encapsulation, creating a high quality product with enhanced strength for this height and weight class.

The high density particle board core can be easily cut onsite to fit oblique perimeters and around structural details without specialist equipment.

The corner lock panel system provides maximum lateral stability at higher floor heights.

### Covering Options

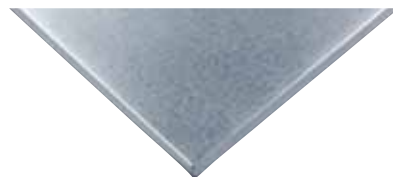
- Standard finish: Galvanised Steel
- Integral HPL, PVC or carpet finishes are available, utilising all of the world's top flooring brands.

### Benefits

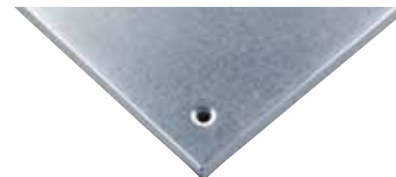
- Non-combustible: Fire Resistant Class 0
- Complies with IEE Regulations (17th Edition)
- Easily cut to fit perimeter / structural details
- Double folded / interlocking encapsulation prevents delamination
- Exceeds PSA MOB PF2 PS/SPU specification standards

### Recommended Applications

- Medium Duty – High density / populated office commercial areas
- Heavy Duty – Plant rooms, server rooms



GRAVITY LAY  
WITHOUT HOLES



CORNER LOCK  
WITH HOLES

Both available as standard

# Specification: Calcium Sulphate System

DIMENSIONS	600mm x 600mm x 33.5mm	INTERIOR	Calcium Sulphate Core
EXTERIOR	Fully Steel Encapsulated	FINISH	Powder Coated

TYPE	AREA OF USE	SYSTEM WEIGHT	PANEL SYSTEM		UNIFORMLY DISTRIBUTED LOAD		SAFETY FACTOR		OVER 25mm SQUARE		PANEL DEFLECTION AFTER 24 HOURS		PANEL SQUARENESS		CONCAVITY & CONVEXITY	
			Gravity Lay	Corner Lock	PSA Spec	Devar Spec	PSA Spec	Devar Spec	PSA Spec	Devar Spec	PSA Spec	Devar Spec	PSA Spec	Devar Spec	PSA Spec	Devar Spec
PANEL NUMBER	PSA Description	Total	Availability		kN/m2	Load			kN		mm		%		mm	
LIGHT GRADE DLG580	General office areas with no heavy equipment	36.30	Yes	Yes	≥ 6.70	11.11	3 x load for 5 mins	✓	≥ 1.50	3.11	≤ 2.40	✓	≤ 0.06	✓	≤ 0.75	✓
MEDIUM GRADE DMG670	General office areas with heavy equipment	39.30	Yes	Yes	≥ 8.00	12.44	3 x load for 5 mins	✓	≥ 3.00	3.55	≤ 2.40	✓	≤ 0.06	✓	≤ 0.75	✓
HEAVY GRADE DHG760	Computer rooms, telecom switch rooms, etc	41.70	Yes	Yes	≥ 12.00	15.55	3 x load for 5 mins	✓	≥ 4.50	4.50	≤ 2.40	✓	≤ 0.06	✓	≤ 0.75	✓
EXTRA HEAVY GRADE DXL850	Specialist applications	44.60	Yes	Yes	≥ 12.00	17.78	3 x load for 5 mins	✓	≥ 4.50	5.55	≤ 2.40	✓	≤ 0.06	✓	≤ 0.75	✓

✓ = meets or exceeds standards

**Delivery on Time - Everytime**

# Specification: Wood Core System

DIMENSIONS	600mm x 600mm x 27.0mm	INTERIOR	High Density Particle Board Core
EXTERIOR	Fully Steel Encapsulated	FINISH	Galvanised Steel

TYPE	AREA OF USE	SYSTEM WEIGHT	PANEL SYSTEM		UNIFORMLY DISTRIBUTED LOAD		SAFETY FACTOR		OVER 25mm SQUARE		PANEL DEFLECTION AFTER 24 HOURS		PANEL SQUARENESS		CONCAVITY & CONVEXITY	
			Gravity Lay	Corner Lock	PSA Spec	Devar Spec	PSA Spec	Devar Spec	PSA Spec	Devar Spec	PSA Spec	Devar Spec	PSA Spec	Devar Spec	PSA Spec	Devar Spec
PANEL NUMBER	PSA Description	Total	Availability		kN/m <sup>2</sup>	Load		kN		mm		%		mm		
MEDIUM GRADE LMG670	General office areas with heavy equipment	31.00	Yes	Yes	≥ 8.00	12.00	3 x load for 5 mins	✓	≥ 3.00	✓	≤ 2.40	✓	≤ 0.06	✓	≤ 0.75	✓
HEAVY GRADE LHG760	Computer rooms, telecom switch rooms, etc	33.20	Yes	Yes	≥ 12.00	13.50	3 x load for 5 mins	✓	≥ 4.50	✓	≤ 2.40	✓	≤ 0.06	✓	≤ 0.75	✓

✓ = meets or exceeds standards

**Delivery on Time - Everytime**

# Pedestals

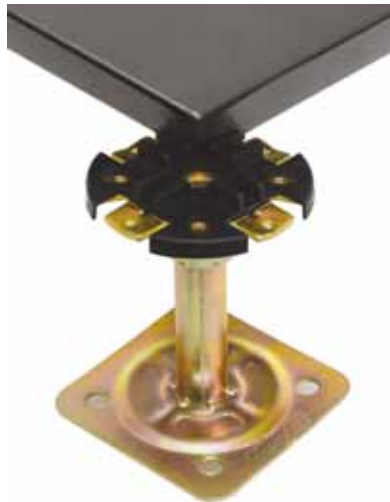
## Unique Devar design for our 600mm x 600mm Panel Systems

### Pedestal Fixing

All pedestals are normally adhered to the subfloor with our own proprietary epoxy adhesive ensuring complete system compatibility and performance. They can also be mechanically fixed to the subfloor. Full details of these different options are available upon request from our Technical Services Team.

#### Genesis 1 Pedestal

- Used in standard installations
- 100mm x 100mm x 2.5mm base plate
- M16 screw lock nut with secure engagement channels
- Projection welded steel



#### Genesis 2 Pedestal

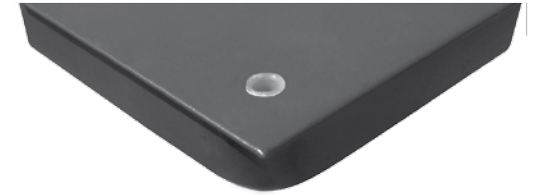
- Used in low profile floor installations
- 100mm x 100mm x 2.5mm base plate
- Die-cast aluminium head



# Stringers, Gaskets & Accessories

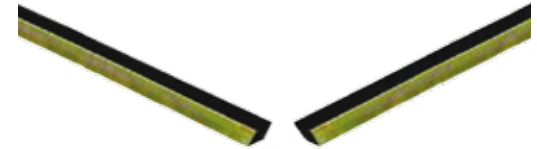
## Snap-on Stringer

A cost-effective solution for further increasing rigidity in light/medium grade systems for use in exceptionally highly populated areas.



## Bolt-on Stringer

- Increases system rigidity.
- For use with extra heavy grade panels.
- 540mm long and made from galvanised steel.
- Screwed to the pedestal heads for enhanced structural performance.



## Gasket

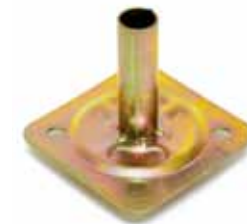
- Injection moulded and manufactured using conductive material.
- Double vertical spines to allow secure panel engagement.
- Corner lock holes for screw fixing.



## Accessories

A full range of accessories are also available for use with our system including:

- steps
- ramps
- cavity barriers
- fire barriers
- lifting devices
- bridging sections
- edge trims
- electrical outlet boxes
- grommets
- air grilles



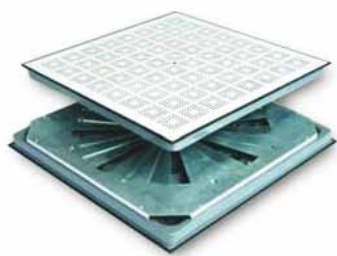
# HPL/ESD PVC Covered Panels

These panels help to reduce the static electricity generated by computers and other electrical equipment thus improving their performance and lifespan. As a result, our system is frequently specified for computer rooms where a strictly controlled environment is critical.

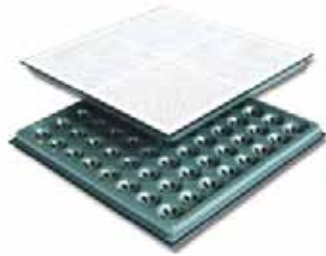
Devar's HPL/ESD PVC covered panels can be installed directly onto a rigid network system of pedestals and stringers. The panels are manufactured to exact tolerances allowing them to be freely interchanged. Devar's system can incorporate a variety of outlet boxes which facilitate comprehensive wiring configurations to optimise cabling within computer rooms.

## HPL/ESD PVC covered panels with exceptional anti-static qualities

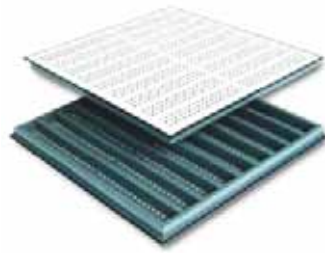
### Perforated HPL/ESD PVC panels



DEVAR PERFORATED PANEL 1  
With Damper

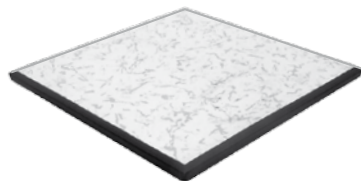


DEVAR PERFORATED PANEL 2  
Without Damper

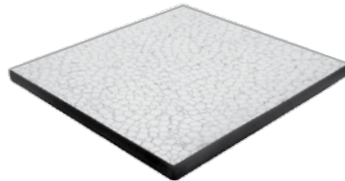


DEVAR PERFORATED PANEL 3  
Without Damper

### Non-perforated HPL/ESD PVC panels



DEVAR NON-PERFORATED PANEL 4



DEVAR NON-PERFORATED PANEL 5



A wide range of colour options is available.

# Services

## Supply

Devar has invested in an in-house manufacturing facility to produce a raised access flooring system that has already been successfully installed on various high calibre projects.

We are now offering to supply our own proprietary raised access flooring system to our clients here in the United Kingdom and worldwide.

## Installation

Installation forms the crucial link between manufacturer and client ensuring the optimum performance of the product and its functionality.

In order to address these issues it is necessary to plan the installation carefully from the outset, and to monitor these parameters constantly during the installation.

At Devar, we can provide the complete solution to your raised access flooring needs.

## Consultancy

Our technical support team provides a full consultancy service that can include but is not limited to:

- Laser level survey of site
- Design
- Testing and Commissioning
- Upgrading of existing installations
- Project Management



# Performance

The following test results were achieved by our system as tested and certified by both BTL and SGS based on our DMG 670 Medium Grade Calcium Sulphate Core Panel and LMG 670 Medium Grade Wood Core Panel. These results were achieved when tested to comply with PSA MOB PF2 PS/SPU. All testing data and certification is available on request and can also be viewed at [www.devargroup.com](http://www.devargroup.com)

TEST REF NO	TEST PARAMETERS	DMG 670 RESULT	LMG 670 RESULT
T1.00	Concavity and Convexity	PASS	PASS
T2.00	Twist	PASS	PASS
T3.00	Panel squareness	PASS	PASS
T4.00	Pull off strength of panel edge strip	N/A	N/A
T5.00	Free play in pedestal	PASS	PASS
T6.00	Air leakage rate	0.32 l/s.m <sup>2</sup> @ 25 Pa	2.33 l/s.m <sup>2</sup> @ 25 Pa
T7.00	300mm square loading	PASS	PASS
T8.00	25mm square point loading	PASS	PASS
T8a.00	25mm square point loading on perimeter cut panel	PASS	PASS
T9.00	Four point loading	N/A	N/A
T10.00	Uniformly distributed load	PASS	PASS
T11.00	Safety factor	PASS	PASS
T12.00	Soft body impact	PASS	PASS
T13.00	Hard body impact	PASS	PASS
T14.00	Pedestrian dynamic load	PASS	PASS
T15.00	Pedestal strength – horizontal load	PASS	PASS
T16.00	Pedestal strength – vertical load	PASS	PASS
T17.00	Effect of temperature	PASS	PASS
T18.00	Effect of humidity	PASS	PASS
T19.00	Determination of surface spread of flame and index of performance	PASS	PASS
T20.00	Small scale fire test	PASS	PASS
T20a.00	Thermal properties	PASS	PASS

## CONCLUSION

Our individual panels and pedestals meet all the required standards for performance and safety. More importantly, our complete system is fully compliant with the PSA MOB PF2 PS/SPU standard. This is your guarantee of peace of mind in specifying our product for your projects.

# Quality Assurance

## Quality

At Devar we always insist on delivering the highest quality of product and service levels to all our clients. Having experienced this, our customers return to us time and time again.

We are proud of our first class reputation. You can be assured that this attention to detail and commitment continues throughout all of our processes.

## Manufacturing

Our system is constructed to the highest standards and strictest tolerances of quality control in our impressive manufacturing facility.

## Testing

Our system is tested and certified by SGS: the world's largest body for inspection and testing. It is also tested by Building Testing Limited (BTL) who are a prominent independent UKAS accredited testing house.

This ensures that the testing, assessment and certification criteria utilised meets all the relevant quality, safety and performance standards demanded by our clients.

## Compliance

Our system is fully compliant with, and indeed exceeds, the performance parameters stipulated by the industry standard for performance and suitability: PSA MOB PF2 PS/SPU

## Testing & Certification

Full PSA MOB PF2 PS/SPU standard testing by BTL and SGS.

Full certification data available upon request or on our website.

## Guarantee

Our system is guaranteed for 25 years.



## After sales

Full after-sales technical support team at your disposal for the lifetime of the installation.

## Cost Affordability

Manufacturing efficiencies ensure that our panel system is highly cost effective when compared to systems from other manufacturers.

## Safety

Non-combustible: Fire Resistant Class 0

## Environment

No timber product or volatile organic compounds (VOC's) are used in the manufacture of our Calcium Sulphate core panels and our Wood core panels are 100% recyclable.

## Performance

Excellent acoustic qualities. The rigid construction of all Devar panels helps eliminate noise generated from the surroundings, creating a perfect working environment. The concave shape of the understructure of our Calcium Sulphate core panels further enhances the excellent acoustic performance.



# Client List

Devar clients include:



## RETAIL

Asda  
B&Q  
Boots  
Brewers Fayre  
Debenhams  
Dobbies Garden Centres  
Homebase  
Marks & Spencer  
McDonalds  
Morrisons  
Pizza Hut  
Real Radio  
Saga Radio  
Scottish Power  
Scottish & Southern Energy  
Scottish Water  
WH Smith

## HOSPITALITY

Gleneagles Hotel  
JD Wetherspoon  
Old Course Hotel, St Andrews  
Premier Inns  
Radisson Hotels  
SECC

## EDUCATION

Glasgow University  
Heriot Watt University  
Stirling University  
University of Strathclyde

## PUBLIC SECTOR

BBC  
DVLA  
East Renfrewshire Council  
Fife Council  
Gallery of Modern Art  
GHA  
Glasgow City Chambers  
Glasgow City Council  
Highland Council  
HMRC  
Inverclyde Council  
Mitchell Library  
MOD  
North Lanarkshire Council  
Renfrewshire Council  
Royal Mail  
Scottish Courts Administration  
Scottish Prison Service  
South Lanarkshire Council

## FINANCIAL SERVICES

American Express  
Aviva  
Clydesdale Bank  
Esure  
JP Morgan  
Legal & General  
Lloyds Banking Group  
Nationwide  
Prudential  
RBS  
RSA  
Santander  
Standard Life  
Zurich

## ELECTRONICS

IBM  
JVC  
Motorola  
National Semi-Conductors  
Siemens  
Solectron  
Sun Microsystems

## SPORTS

Ayr Racecourse  
Celtic FC  
Kelvin Hall Sports Arena  
Pollok Golf Club  
Rangers FC  
Scottish National Stadium, Hampden

## COMMERCIAL

Arnold Clark  
BAE Systems  
Baker Tilly  
BP  
British Airports Authority  
British Energy  
BT  
BUPA  
Caterpillar  
Daily Record & Sunday Mail  
Johnson Controls  
KPMG  
RAC  
Rolls Royce  
Scottish Media Group  
Sodexo  
St Enoch Square, Glasgow  
Unilever

## HEALTHCARE

Ayrshire & Arran Health Board  
Golden Jubilee National Hospital  
Marie Curie Cancer Care  
NHS Greater Glasgow & Clyde  
Prince & Princess of Wales Hospice

## CONSTRUCTION

Amec  
Balfour Beatty  
Bovis  
CBRE  
City Building (Glasgow) LLP  
Dawn Construction  
ESA McIntosh  
FES FM  
Havelock Europa  
Kier  
Laing O'Rourke  
Miller Construction  
Morgan Ashurst  
Pihl  
Sir Robert McAlpine  
Skanska





#### DEVAR ACCESS FLOORING

##### GLASGOW

Spiersbridge Business Park  
Thornliebank  
Glasgow  
G46 8NL  
United Kingdom

Tel: +44 (0) 141 638 2203

Fax: +44 (0) 141 620 0207

##### LONDON

3rd Floor  
207 Regent Street  
London  
W1B 3HH  
United Kingdom

Tel: +44 (0) 20 7692 4016

Fax: +44 (0) 20 7692 4017

##### HONG KONG

Level 19  
2 IFC  
8 Finance Street  
Central  
Hong Kong

Tel: +852 2251 8681

Fax: +852 2251 1618

##### SHANGHAI

Level 23  
Citigroup Tower  
33 Huayuanshiqiao Road  
Shanghai 200120  
China

Tel: +86 21 6101 0342

Fax: +86 21 6101 0343



[www.devargroup.com](http://www.devargroup.com)  
Email: [enquiries@devargroup.com](mailto:enquiries@devargroup.com)



revive<sup>75</sup>

Printed on Revive 75 special silk  
which contains 75% recycled fibre  
and is FSC certified.